



4G LTE
M2M ROUTER



DIGI TRANSPORT[®] WR31

Intelligent 4G LTE router designed for critical infrastructure and industrial applications

The Digi TransPort WR31 is an intelligent 4G LTE router designed for critical infrastructure and industrial applications. It provides a secure, reliable connection to industrial controllers, process automation equipment and smart grid assets on third party sites or remote locations. Software-defined, multi-carrier networking and global LTE and HSPA+ options make it easy to get connected. This drop-in connectivity gives operators a way to reduce downtime and service calls and also increase revenue by bringing distributed sites online faster.

Ideal for Connecting:

- Building and process automation controllers
- Smart grid assets (meters, switches, controllers)
- IP cameras and access controllers
- Remote data loggers, flow meters and sensing equipment
- Telco infrastructure
- Traffic and obstruction lighting

BENEFITS

- Global HSPA+ and 4G LTE support and certification on major carrier networks around the world
- Ethernet, serial and I/O for connecting diverse field assets
- Extremely resilient cellular connection through Digi's patented SureLink[™], VRRP+ protocol, and dual SIM slots
- License-free enterprise software: VPN, firewall, logging and authentication
- Digi Remote Manager provides mass configuration, device management, and troubleshooting tools
- Rugged aluminum enclosure, optimized for DIN rail or shelf mounting
- C1D2 and ATEX rated

RELATED PRODUCTS



Digi TransPort[®]
WR21



Digi TransPort[®]
WR44 R



Digi XLR PRO[™]

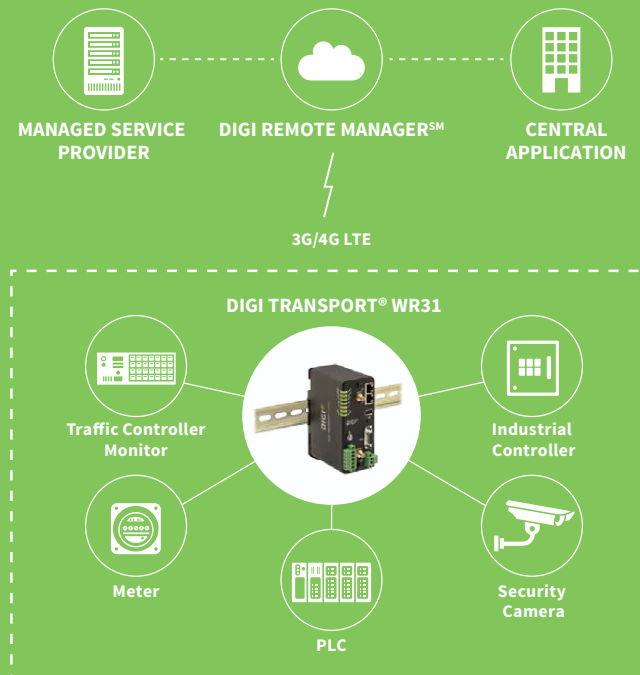


Accessories



Digi Remote ManagerSM

APPLICATION EXAMPLE



SPECIFICATIONS

Digi TransPort® WR31

WIRELESS INTERFACES

WWAN

LTE – NORTH AMERICA (L5)	Software defined multi-carrier (Verizon, AT&T, and Sprint) 700/850/1700(AWS)/1900 MHz; 2G/3G GSM fall back to 850/900/1700AWS/1800/1900/2100 MHz; 2G/3G CDMA fall back to 800/1900 MHz; Transfer rate (max): 50 Mbps up, 100 Mbps down, Verizon Private Network, DMNR and PNTM Approved
LTE – EMEA/APAC (L1)	800/850/900/1800/1900/2100/2600 MHz; 3G fall back to 850/900/1900/2100MHz and 2G fall back to 850/900/1800/1900MHz; Transfer rate (max): 50 Mbps up, 100 Mbps down
HSPA+ - (U9)	850/900/1700 (AWS)/1900/2100 MHz; Transfer rate (max): 5.76 Mbps up, 21 Mbps down
CONNECTORS	CONNECTORS 2 x 50 Ω SMA (Center pin: female)
SIM SLOTS	2
SIM SECURITY	Screw-down SIM cover

SOFTWARE & MANAGEMENT

REMOTE MANAGEMENT	Digi Remote Manager SM ; SNMP v1/v2c/v3
LOCAL MANAGEMENT	WebUI (HTTP/HTTPS); CLI (Telnet, SSH, SMS)
MANAGEMENT/TROUBLESHOOTING TOOLS	FTP, SFTP, SCP; Protocol analyzer with PCAP for Wireshark; Event logging with Syslog and SMTP; NTP/SNTP

WIRED INTERFACES

ETHERNET

PORTS	(2) RJ-45 ports
PHYSICAL LAYER	10/100Base-T
DATA RATE	10/100 Mbps (auto-sensing)
MODE	Full or half duplex (auto-sensing)
INTERFACE	Auto MDI/MDIX

SERIAL

PORTS	RS-232/422/485
DTE/DCE	DCE
SIGNAL SUPPORT	TXD, RXD, RTS, CTS, DTR, DCD, DSR, RI
FLOW CONTROL	Software (XON/XOFF), Hardware supported
COM PORT REDIRECTOR	Digi RealPort®

I/O

CONNECTOR	(5) pin screw down terminal block
DIGITAL	0 – 30 VDC. (2) I/O, Software selectable
ANALOG	(1) analog I/O; 4-20mA or 0-10V, Software selectable; 12 bit resolution

USB

PORTS	(1) USB Type A
STANDARD	USB 2.0

PHYSICAL

DIMENSIONS (L X W X H)	5 in x 3.5 in x 2 in (12.7 cm x 8.9 cm x 5.1 cm)
WEIGHT	1.1 lb. (.5 kg)
STATUS LEDS	Power, Service, WWAN, 3x Signal strength, User Programmable
ENCLOSURE	Aluminum, IP30 rating, chassis ground screw
MOUNTING	DIN rail, wall, or shelf mount

POWER REQUIREMENTS

POWER INPUT	9-30 VDC
POWER CONNECTOR	Screw down removable terminal block
POWER CONSUMPTION	Typical 4 W (Max 6 W)

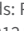
SPECIFICATIONS

Digi TransPort® WR31

ENVIRONMENTAL

HAZARDOUS (CLASS 1 DIV 2)	Yes
OPERATING TEMPERATURE	-30° C to +70° C (-22° F to +158° F) Reduced cellular performance above 60° C
STORAGE TEMPERATURE	-40° C to +85° C (-40° F to +185° F)
ETHERNET ISOLATION	1.5 kV RMS
SERIAL PORT PROTECTION (ESD)	15 kV
RELATIVE HUMIDITY	5% to 95% (non-condensing)

APPROVALS

GSM/UMTS	PTCRB
CELLULAR CARRIERS	Certified by most major carriers. See www.digi.com for a full list
SAFETY	Hazardous locations: ANSI/ISA-12.12.01-2015, CAN/CSA C22.2 NO.213-15 Ordinary locations: UL 60950-1, 2nd Edition, 2014-10-14 ATEX standards: Protection method  II 3 G Ex nA IIC T4 Gc EN 60079-0:2012+A11:2013, EN 60079-15:2010, DEMKO 15 ATEX 1574X
EMISSIONS/IMMUNITY	CE, FCC Part 15 Class B, AS/NZS CISPR 22, EN55024, EN55022 Class B

WARRANTY

PRODUCT WARRANTY	5 years
------------------	---------

ENTERPRISE SOFTWARE

DESCRIPTION

PROTOCOL SUPPORT

HTTP, HTTPS, FTP, SFTP, SSL, SMTP, Device Cloud SNMP, SNMP (v1/v2c/v3), SSH, Telnet and CLI for web management; remote management via Digi Remote Manager; SMS management, protocol analyzer, ability to capture PCAP for use with Wireshark; DynDNS, Dynamic DNS client compatible with BIND9/No-IP/DynDNS

SECURITY/VPN

IP filtering, Stateful inspection firewall with scripting, address and port translation; VPN: IPsec with IKEv1, IKEv2, NAT Traversal; SSL, SSLv2, SSLv3, FIPS 197, Open VPN client and server; PPTP, L2TP; VPN Tunnels: 5. Cryptology: SHA-1, MD5, RSA; Encryption: DES, 3DES and AES up to 256-bit (CBC mode for IPsec); Authentication: RADIUS, TACACS+, SCEP for X.509; certificates; Content Filtering (via 3rd party); MAC Address Filtering; VLAN support

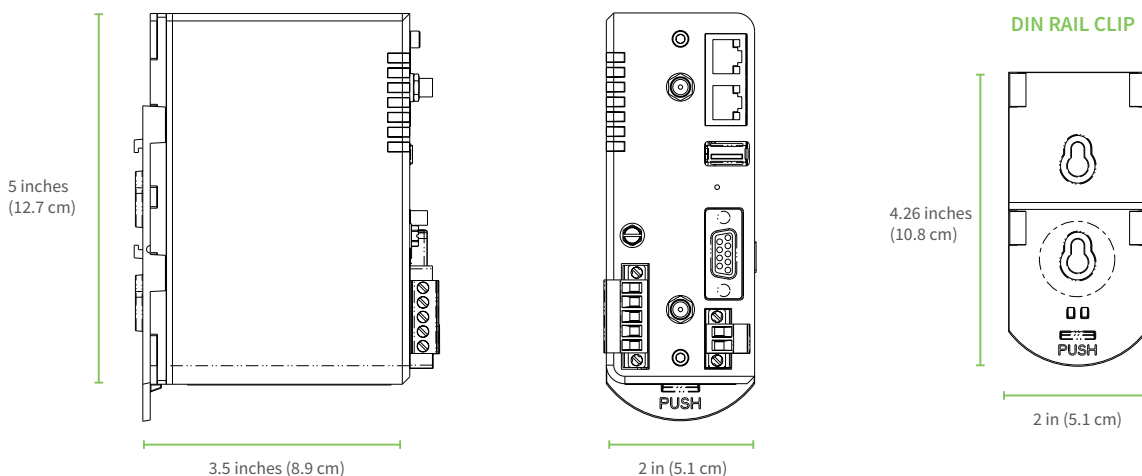
ROUTING/FAILOVER

IP pass-through; NAT, NATP with IP Port Forwarding; Ethernet Bridging; GRE; Multicast Routing; Routing Protocols: PPP, PPPoE, RIP (v1, v2) OSPF, SRI, BGP, iGMP routing (multicast); RSTP (Rapid Spanning Tree Protocol); IP Failover: VRRP, VRRP+TM; Automatic failover/failback to second GSM network/Standby APN

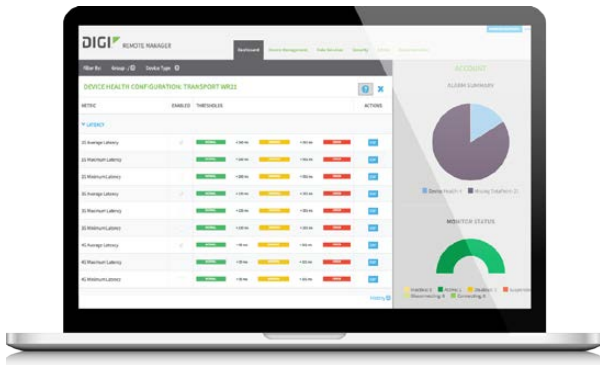
OTHER PROTOCOLS

DHCP; Dynamic DNS client compatible with BIND9/No-IP/DynDNS; QoS via TOS/DSCP/WRED

PRODUCT IMAGES



DIGI REMOTE MANAGERSM



CAPABILITIES

- Centralized management of remote devices over 3G/4G LTE
- Define standard configurations and automatically monitor individual devices for PCI security compliance
- Report and alert on performance statistics, including connection history, signal quality, latency, data usage and packet loss
- No servers or applications to operate and maintain
- Complete tasks for your entire device network in minutes
- Edit configurations and update firmware for your individual devices or groups
- Monitor the status and location of your remote device via a web browser
- Active or deactivate cellular lines and monitor data to ensure you never incur overage charges

INFRASTRUCTURE

- Hosted in multiple commercial-grade SAS 70 certified facilities in North America and Europe
- Superior availability, operating to 99.9% or greater
- Open APIs available to support application development

SECURITY

- Certified SSAE-16 and ISO27001 facilities
- Member of the Cloud Security Alliance
- Over 175 security controls in place to protect your data
- Enables compliance with security frameworks like PCI, HIPAA, NIST and more
- Earned SkyHigh's Cloud Trust Program highest ranking of Enterprise-ready
- PCI certified; Attestation of Compliance

PART NUMBERS	DESCRIPTION
WR31-L12A-DE1-TB	Digi TransPort WR31 - Cellular (4G LTE International), Ethernet (2 Ports), Serial (1 RS-232/422/485 Port), I/O (2 Digital, 1 Analog), ATEX, Antennas & Power Supply not included
WR31-L52A-DE1-TB	Digi TransPort WR31 - Cellular (4G LTE Multi-Carrier Software Defined, North America), Ethernet (2 Ports), Serial (1 RS-232/422/485 Port), I/O (2 Digital, 1 Analog), Class 1 Division 2 (C1D2), Antennas & Power Supply not included
WR31-U92A-DE1-TB	Digi TransPort WR31 - Cellular (HSPA+ Global), Ethernet (2 Ports), Serial (1 RS-232/422/485 Port), I/O (2 Digital, 1 Analog), Class 1 Division 2 (C1D2), Antennas & Power Supply not included

FOR MORE INFORMATION
PLEASE VISIT WWW.DIGI.COM

DIGI SERVICE AND SUPPORT / You can purchase with confidence knowing that Digi is always available to serve you with expert technical support and our industry leading warranty. For detailed information visit www.digi.com/support.

© 1996-2016 Digi International Inc. All rights reserved.
All trademarks are the property of their respective owners.

91003183
B5/616

DIGI INTERNATIONAL WORLDWIDE HQ
877-912-3444 / 952-912-3444 / www.digi.com

DIGI INTERNATIONAL FRANCE
+33-1-55-61-98-98 / www.digi.fr

DIGI INTERNATIONAL JAPAN
+81-3-5428-0261 / www.digi-intl.co.jp

DIGI INTERNATIONAL SINGAPORE
+65-6213-5380

DIGI INTERNATIONAL CHINA
+86-21-50492199 / www.digi.com.cn

