

CC1600-Series

Rackmount Modem System



The scalable CC1600-Series 19" rackmountable card cage consolidates up to 16 V.92/56K modem cards for dial-up or 2- and 4-wire leased line service. This system is ideal for businesses that want to provide dial-in remote access, dial-in/dial-out datacomm or dial-out faxing.

Benefits

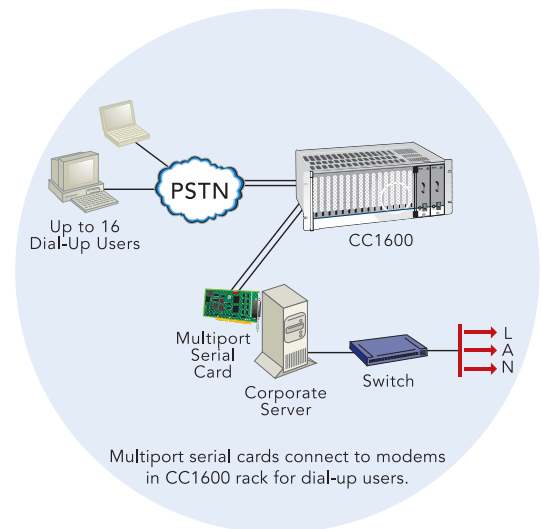
- Consolidate modems
- Easily scaled
- Proven reliability
- Easy to install

Rackmount Chassis Features

- Supports up to 16 V.92/56K modem cards
- Hot-swappable modem cards
- Hot-swappable, dual redundant power supplies*
- Easily scaled capacity to accommodate increased load/usage

Modem Card Features

- V.92/56K download speeds and 48K upload speeds when connecting with V.92 servers
- Class 1 and Class 2 faxing at 14.4K
- V.44 compression improves data throughput rates
- Synchronous and asynchronous support
- Dial-up and 2-wire leased line support
- 4-wire leased line support and dial backup
- Remote configuration for centralized setup and management
- Pass-through and fixed callback security
- U.S. caller ID reporting
- Flash memory for easy updates
- Two-year warranty



* Sold separately.

Applications

Remote Access. Give your telecommuters and road warriors access to the central site LAN and the Internet with the CC1600-Series rackmountable card cage.

Dial-Out Services. In addition to dial-in services, the CC1600-Series rack can also provide dial-out Internet access to LAN users. This eliminates the cost and hassle of installing and maintaining modems and phone lines for every desktop.

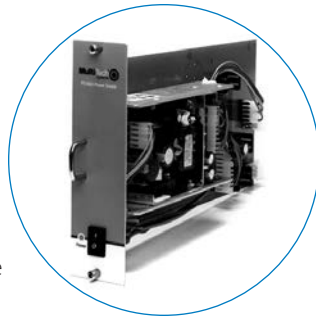
Fax Services. The CC1600-Series rack is an ideal solution for dedicated fax servers. The easily installed, reliable modems provide fax send and receive capabilities in one small rack.

System Architecture

Cost-Effective. The CC1600-Series rack conserves back office space and minimizes administration expenses by consolidating up to 16 modems in one standard equipment rack using a single power outlet.

Scalable. Scaling dial-in/dial-out services through the CC1600-Series rack is easy and cost-effective. Select the number of modem cards to meet today's networking needs. As demand grows simply add more cards to your system and preserve your initial investment.

Serviceability. The CC1600-Series rack provides the option for dual-redundant power supplies that are hot-swappable. In addition, individual modem cards are hot-swappable so a card can be installed or removed without interrupting service to the other cards on the system.



Diagnostics. The power-on self-test, local analog loop, local digital loop, and remote digital loop diagnostics provide valuable information on the CC1600-Series rack.

Fully Tested and Supported. All CC1600-Series rack components are fully tested and supported by Multi-Tech so there is only one place to call when you need technical support.

Comprehensive Service and Support. The Multi-Tech commitment to service means we provide a two-year product warranty and service that includes technical support, 24-hour web site and ftp support.

Specifications

Card Cage

Description: Metal construction with vent holes, built-in mounting brackets, & connections for power, data ports, & phone line or digital service
Power Supply: 70W fully loaded; 5VDC & ±15VDC regulated
Cooling Fan: 1
Connectors: One 3-prong grounded receptacle, 16 DB25 data ports, & 16 RJ-11 jacks

Physical Description

19" w × 7" h × 15" d
(48 cm × 18 cm × 38 cm)
Weight: 21 lbs. with 1 power supply (9.6 kg)
Operating Temp: +32° to +120° F (0 to +50° C)

Modem Cards

Rates

Data: V.92/56K downloads & 48K upload speeds from V.92 servers; V.90/56K downloads from V.90 servers, 33.6K bps transfers with other servers
Fax: 14.4K & below
Error Correction: V.42
Data Compression: V.44, V.42bis, MNP® Class 5
Fax Standards: V.17, Group 3; Class 1 & Class 2
DTE Interface: RS-232C/D

Physical Description

10.5" w × 5.5" h × 0.9" d; 1.5 lbs.
(26.7 cm × 14.0 cm × 2.2 cm; 0.68 kg)
Operating Temp: +32° to +120° F (0 to +50° C)

Ordering Information

Product	Description	Region
Card Cage CC1600-11L	RJ-11 Chassis (Dial-Up)	US/Can
Power Supply PS1600*	90-245v AC Power Supply	US/Can
Modem Card MT5600BR-V92	56K Rack Modem	US/Can

Produced in the US of US and non-US components.

Features and specifications are subject to change without notice.

Trademarks / Registered Trademarks: MultiMobile, Multi-Tech, and the Multi-Tech logo: Multi-Tech Systems, Inc. / All other products and technologies are the trademarks or registered trademarks of their respective holders.

World Headquarters
Tel: (763) 785-3500
(800) 328-9717
www.multitech.com

EMEA Headquarters
Multi-Tech Systems (EMEA)
United Kingdom
Tel: +(44) 118-959 7774