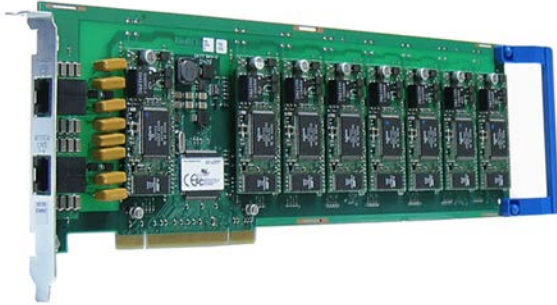


# MultiModem® ISI

## Multipoint Analog Modem Card



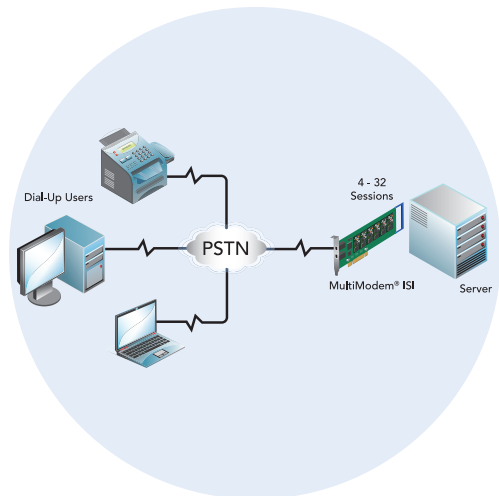
The MultiModem® ISI modem card is ideal for small- to mid-sized companies requiring analog dial-up remote access or a dedicated fax server solution. It provides four or eight built-in V.92/56K modems for cost-effective, high-density, server-based remote access. The MultiModem ISI modem card also offers V.34/33.6K Super G3 fax and Error Correction Mode, that can reduce fax transmission time by more than half when compared to traditional fax modems.

### Features

- Available with four or eight integrated V.92/56K modems
- V.92/56K download speeds and 48K upload speeds when connecting with V.92 servers
- Class 1.0 and Class 2.1 faxing at speeds to V.34/33.6K bps (Super G3)
- Error Correction Mode (ECM) provides fast and reliable fax transmissions
- V.44 compression improves data throughput rates
- U.S. Caller ID reporting
- Sustained data rates to 460.8K per port
- Phone cables included
- Compatible with Windows® 2000/XP/2003/Vista/2008/7 (32-bit/64-bit) and Linux
- One server can support up to four modem cards
- Remote configuration for centralized setup and management
- 3.3V and 5V Universal PCI or PCI Express models
- Compatible with PCI-X slot (Universal PCI models)
- Flash memory for easy updates
- Two-year warranty

### Benefits

- High-density, V.92 connections
- V.34/33.6K Super G3 fax with Error Correction Mode
- Supports leading remote access and fax software
- Universal PCI and PCI Express



## Highlights

**Cost-Effective & Scalable.** The MultiModem ISI modem card provides four or eight dial-up sessions using only one server slot. When demand exceeds one modem card, you can simply add up to three additional cards.

**V.92 Dial-out Connections.** The MultiModem ISI modem card supports V.92/56K dial-out and V.34/33.6K dial-in connections. With V.92 dial-out, you can achieve an upload speed of 48K bps (30% increase over V.90 modems).

**Enhanced Fax Features.** The MultiModem ISI modem card supports V.34 fax and Error Correction Mode providing significant performance and reliability enhancements over previous fax standards. V.34 sends and receives faxes at speeds up to 33.6K, more than double the speed of the V.17/14.4K fax standard. Error Correction Mode adds reliability while increasing performance of fax transmissions. Together these enhancements increase the performance of the MultiModem ISI modem card to levels previously only found in more expensive dedicated fax boards and machines.

**V.44 Compression.** V.44 compression standard improves V.42bis data compression anywhere from 20 to 60%, up to as much as 200% for certain types of highly compressible data. This compression technique enables data throughput rates of higher than 300K bps.

**Simplify Remote Access.** The fully-integrated MultiModem ISI modem card is easy to set up and manage. You only have to connect the phone lines. There are no external modems and power cords to hassle with; plus it saves back office space since the modems are located on the card.

**Comprehensive Service and Support.** The Multi-Tech commitment to service means we provide a two-year product warranty and service that includes free technical support, 24-hour web site and ftp support.

## Specifications

### Modem

Data: V.92, V.90, enhanced V.34, V.32bis, V.22bis  
Error Correction: V.42, MNP Class 3 & 4  
Data Compression: V.44, V.42bis, MNP Class 5

### Fax

Standards: V.34, V.17, V.29, V.27ter, V.21, T.30, T.30 Annex A, T.30 Annex F, T.31, T.31 Annex B, T.32 Annex C, TR29.2 Class 2 Recommendation  
Rates: 33.6K, 31.2K, 28.8K, 26.4K, 24K, 21.6K, 19.2K, 16.8K, 14.4K, 12K, 9600, 7200, 4800, 2400, 300 bps  
Error Correction: ECM  
Compression: MH (T.4), MR (T.4), & MMR (T.6)  
Conversion: Real time (on-the-fly) compression conversion  
Commands: Class 1, 2, 1.0, 2.0, 2.1

### Bus Type

3.3V & 5V Universal PCI or PCI Express (x1)

### Operating System Support

Windows 2000/XP/2003/Vista/2008/7 (32-bit/64-bit) & Linux

### Cabling

Fan out cable with 1 or 2 RJ-45 connectors & 4 or 8 RJ-11 connectors

### Physical Description

12.28" L x 4.2" W; 8.7 oz  
(31.2 cm x 10.7 cm; 247 g)

### Operating Environment

Temperature Range: +23° to +140° F (-5° to +60° C)  
Humidity: 20% to 90% RH noncondensing

### Approvals

CE Mark  
EMC: FCC Part 15 Class B, EN 55022, EN 55024  
Safety: UL/cUL 60950-1, EN 60950-1, AS/NZS 60950:2000, CCC  
Telecom: 47CFR Part 68, CS03, TBR21  
Other countries also included

## Ordering Information

| Product       | Description                        | Region |
|---------------|------------------------------------|--------|
| ISI5634UPCI/8 | V.92, 8-Modem Card - Universal PCI | Global |
| ISI5634UPCI/4 | V.92, 4-Modem Card - Universal PCI | Global |
| ISI9234PCIE/8 | V.92, 8-Modem Card - PCI Express   | Global |
| ISI9234PCIE/4 | V.92, 4-Modem Card - PCI Express   | Global |

Produced in the US of US and non-US components.

Features and specifications are subject to change without notice.

**Trademarks / Registered Trademarks:** MultiModem, Multi-Tech, and the Multi-Tech logo: Multi-Tech Systems, Inc. / All other products and technologies are the trademarks or registered trademarks of their respective holders.

**World Headquarters**  
Tel: (763) 785-3500  
(800) 328-9717  
[www.multitech.com](http://www.multitech.com)

**EMEA Headquarters**  
Multi-Tech Systems (EMEA)  
United Kingdom  
Tel: +(44) 118-959 7774