

AirLink™ Raven XE Intelligent 3G Gateway

Rugged Design and Advanced Security for Fixed and Portable Wireless Communication

The AirLink™ Raven XE is a secure Ethernet gateway ideal for enterprise customers requiring 24/7 unmanned operation of remote assets and broadband connectivity. Remote configuration and troubleshooting capabilities virtually eliminate service calls to remote equipment, resulting in a quick return on investment. With simple installation and configuration requirements, the Raven XE is designed to handle robust, fixed and portable applications requiring broadband communication speeds and bandwidth.

IDEAL FOR BROADBAND DATA APPLICATIONS

The Raven XE is a versatile tool for myriad broadband commercial fixed or portable network connectivity and business continuity data applications. Its compact form factor enables integration into close quarters, such as ATMs, kiosks, and media servers, while its rugged design makes it an ideal option for surveillance and digital signage. Multiple levels of security ensure data is safe from unauthorized access and enable the Raven XE to be part of a PCI compliant solution for payment applications. Furthermore, its routing features, like NAT and Port Forwarding, enable the Raven XE to be connected to a switch for a routing solution.

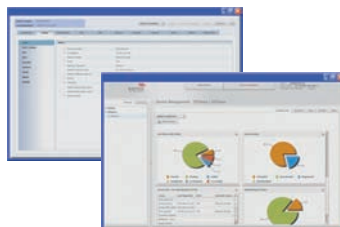
RUGGED INTELLIGENCE

ALEOS™, the long-standing industry benchmark for embedded intelligence, powers AirLink devices, and supports 24/7 always-on availability, persistent connectivity, end-to-end security, real-time two-way data exchange, and remote device management. Designed to meet the needs of industrial M2M, enterprise solutions and mobile applications, ALEOS features embedded machine protocols, routing and location protocols. To ensure reliable, advanced security, ALEOS includes IPsec VPN and GRE tunneling.

REMOTE MANAGEMENT

ALEOS powered devices include the AirLink suite of management tools enabling remote configuration, administration, and control of deployments of any size, from one device to thousands.

Together, ALEOS and the AirLink management tools enable customers to extend their enterprise by managing deployments from a central location, or anywhere with an Internet connection.



KEY BENEFITS:

- Easy integration with customer equipment
- Consistent user experience across multiple wireless network technologies
- Ethernet connectivity for easy setup
- Remote management and troubleshooting
- IPsec VPN to protect your data from unauthorized access



POWERED BY: ALEOS



AirLink™

AirLink™ Raven XE

Intelligent 3G Gateway

Technical Specifications

PRODUCT FEATURES

- Persistent 3G Network Connectivity
- Low Power Consumption
- Compact Size for Easy Integration
- Rugged Aluminum Case
- Certified for Hazardous Environments
- Remote Management and Configuration

HIGHLY INTELLIGENT

- Security
 - IPsec VPN
 - GRE Tunneling
- Events Reporting Engine
- Routing Protocols
- Highly Configurable

TECHNOLOGY

- HSUPA with fallback to:
HSDPA, UMTS, EDGE, GPRS, GSM

or

- EV-DO Rev. A with fallback to:
CDMA, EV-DO Rev. 0,
CDMA 1x, CDMA IS-95

BANDS

- Tri-Band UMTS/HSDPA/HSUPA
850, 1900, 2100 MHz
- Quad-Band GPRS/EDGE
850, 900, 1800, 1900 MHz

or

- Dual-Band EV-DO Rev. A
800, 1900 MHz

or

- Quad-Band UMTS/HSDPA/HSUPA
850, 900, 1900, 2100 MHz

ENVIRONMENTAL

- Operating Temperature:
-30° to +70°C / -22° to +158°F
- Storage Temperature:
-40° to +85°C / -40° to +185°F

DIMENSIONS

- 76 mm x 27 mm x 94 mm
3.0 in x 1.1 in x 3.7 in
- 200 grams
7.1 oz

STANDARDS/APPROVALS

- FCC
- Industry Canada
- Class I Div 2
- RoHS
- Carrier Specific Approvals
- PTCRB
- CE
- A-Tick

HOST INTERFACES

- Ethernet: 10/100 BASE-T RJ-45
- USB Type B5 Pin Mini
- Antenna Connections:
 - Cellular - 50 Ohm SMA
 - Receive Diversity - 50 Ohm SMA
- I/O Ports: 2

APPLICATION INTERFACES

- TCP/IP, UDP/IP, DHCP, HTTP, SNMP, SMTP, SMS, MSCI

LED INDICATORS

- Network
- Signal
- Activity
- Power



APPLICATIONS:

- Surveillance
- Retail/POS
- Vending/Kiosk
- Banking/ATM
- Digital Signage
- Remote Monitoring
- Business Continuity

